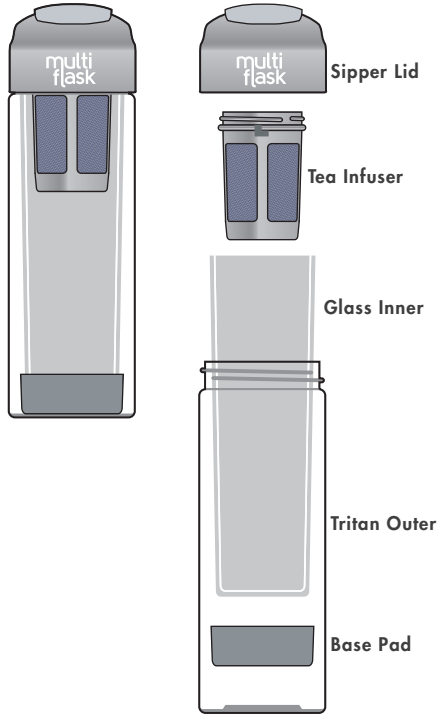


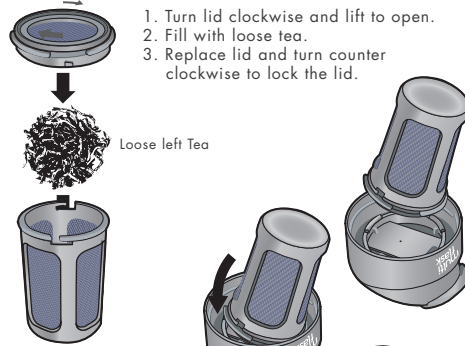
Thoroughly wash Multi Flask before first and every use. Hand wash with warm soapy water is recommended. Before storing the Multi Flask, it is best to disassemble and allow it to dry completely.

The glass inner is hand made from high grade borosilicate glass and should be treated with care. Being a handmade glass component, some condensation will form on the surface when filled with hot liquids. Some steam/liquid may get by the seal of the glass inner into the outer vessel if the Multi Flask takes a hard hit, this is a feature of the Multi Flask which allows the glass to move slightly to absorb the impact and reduce the chance of breakage. **THE SIPPER LID IS RECOMMENDED FOR HOT LIQUIDS, AND SHOULD BE PLACED ON WITH THE SIPPER HOLE TAB OPEN, TO VENT STEAM PRESSURE OUT SAFELY. ONCE LIQUID HAS COOLED FOR A FEW MINUTES THE SIPPER HOLE TAB CAN BE CLOSED. WHEN USING WITH HOT LIQUIDS THE VESSEL SHOULD BE HELD UPRIGHT.**

Tea Infused

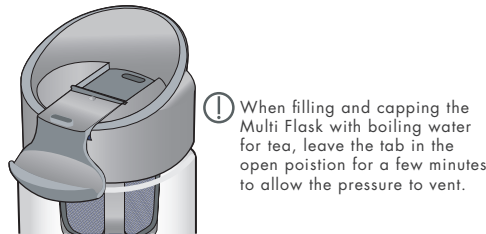


Filling the Tea Infuser

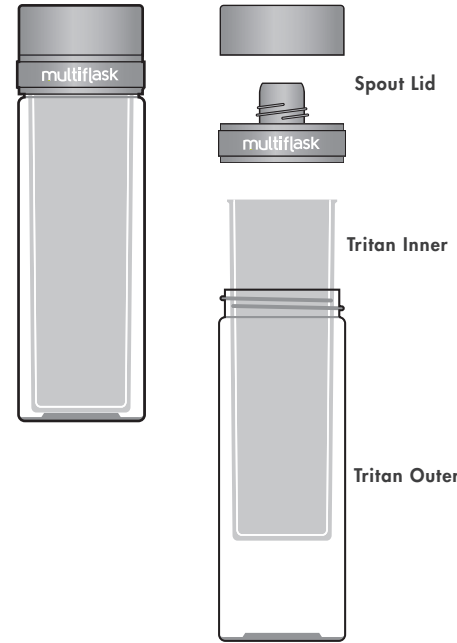


Installing Tea Infuser into the Sipper Lid

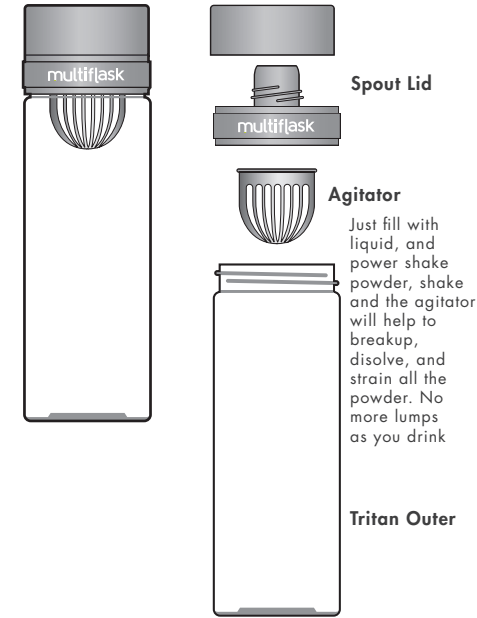
1. Place Tea Infuser on one of the 3 mounts.
2. Pivot down and press firmly to lock on the other 2 mounts.



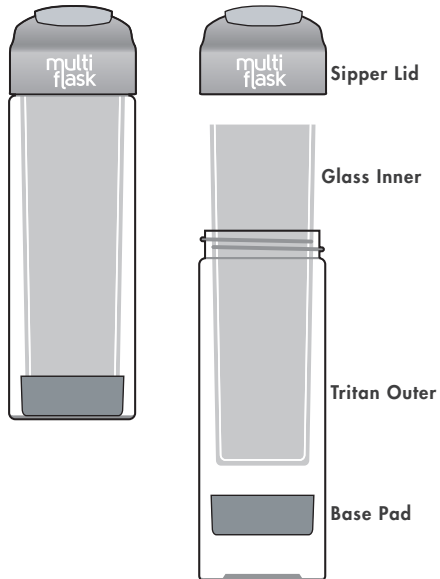
Double Wall Cold Beverage



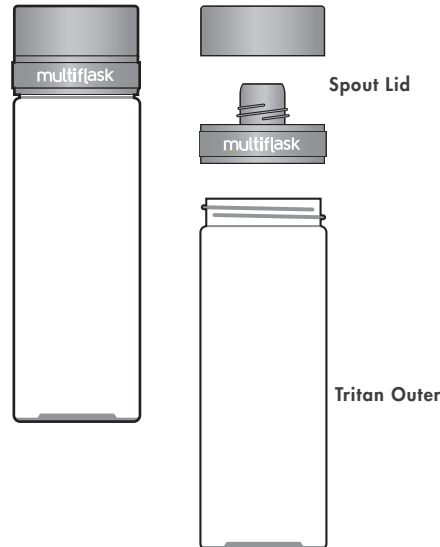
Powder Beverage



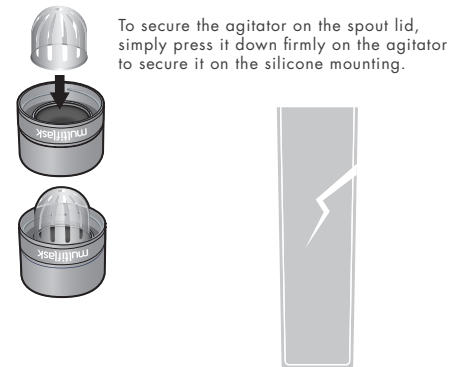
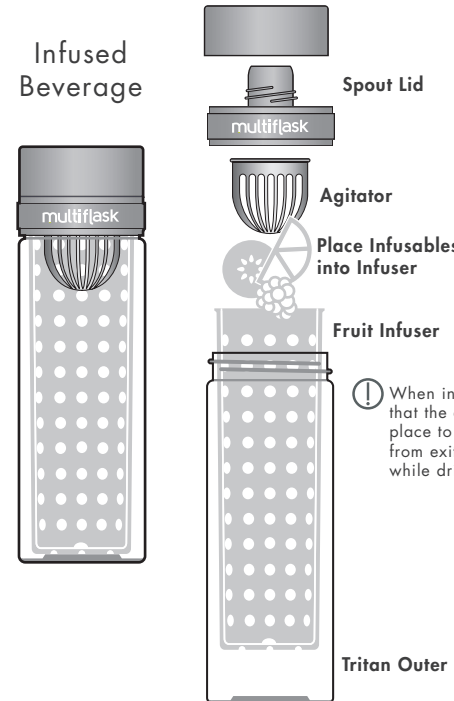
Coffee Hot Beverage



Cold Beverage



Infused Beverage



When infusing ensure that the agitator is in place to prevent objects from exiting the spout while drinking.

If the glass inner shows any sign of chips or cracks discontinue use and discard. Replacement glass inners, parts, and accessories can be ordered from multiflasking.com